



Getting Ahead – Pre-course Work

#ThinkBrock

Biology A Level

Welcome to **Biology A Level**. In preparation for the start of the course, please complete these tasks and have them with you to hand in during your first week of college in September.

These tasks should take you approximately four and a half hours to complete and are designed to give you an introduction to the subject, and the expectations we have for you to complete at least four and a half hours of independent study, per subject, per week.

Cell structure and function

Task 1. Use the link below to help you build an animal and plant cell based on what you would have learned for GCSE Biology/Science.

[Recap cells GCSE](#)

Task 2. Click on the **first** link below and start the animation to discover the structure of animal and plant cells, here you will notice some new organelles. If you want to take a closer look at some of these, click on the second link and select the 'Structures' icon from the list of Tools on the left-hand side of the screen.

[Interactive Eukaryotic Cell Model \(cellsalive.fun\)](#)

[Effigos Explorer - interactive anatomical 3D models](#)

Task 3. Use your new knowledge from the animation to label and annotate the diagrams of the animal and plant cell on the attached worksheets.

What have you learned?

Test your knowledge from these activities by completing the Drag and drop table for organelle function using the link below:

[Cell organelle function drag n drop.](#)

Ready for a quiz?

Take the cells quiz using the link below. You do not have to submit your results, but you can take a screen shot if you like and show it to us on your first day here.

[Cells quiz](#)



Getting Ahead – Pre-course Work

#ThinkBrock

Getting Equipped

You will need the following for this course:

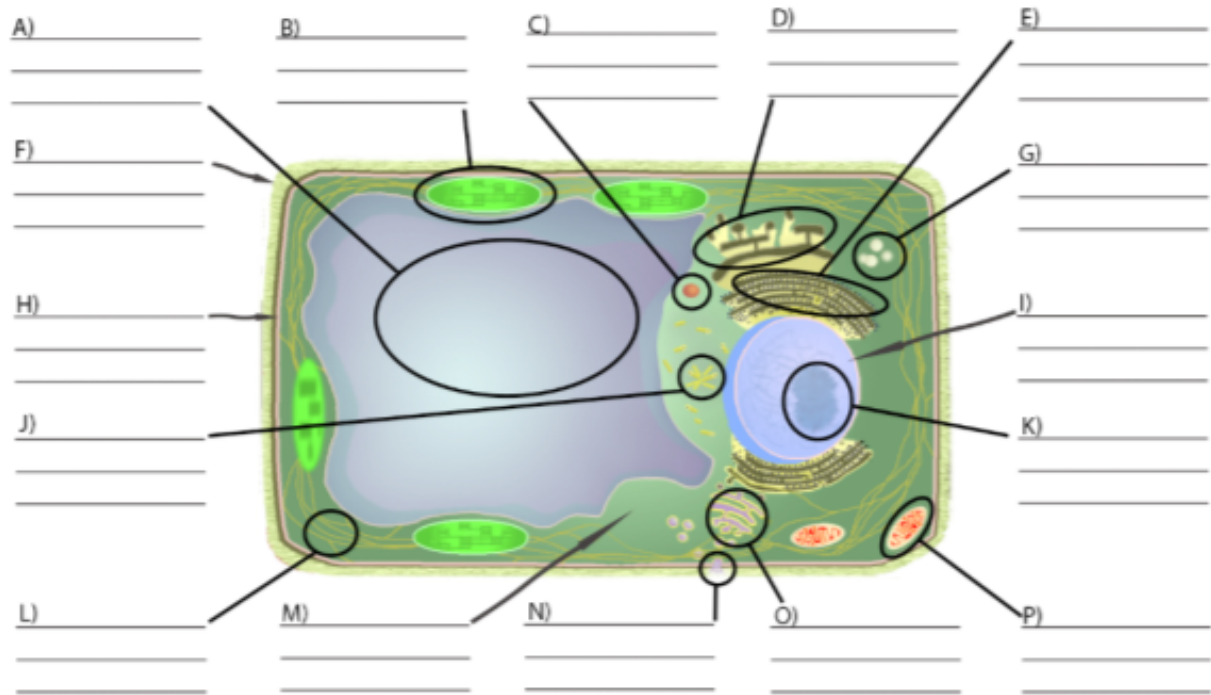
- Pens
- Pencil
- Ruler
- Scientific calculator
- Eraser
- Optional - highlighters

Task 3 Worksheets

Getting Ahead – Pre-course Work

#ThinkBrock

CELLS alive! - Plant Cell Worksheet





Brockenhurst College

Getting Ahead – Pre-course Work

#ThinkBrock